

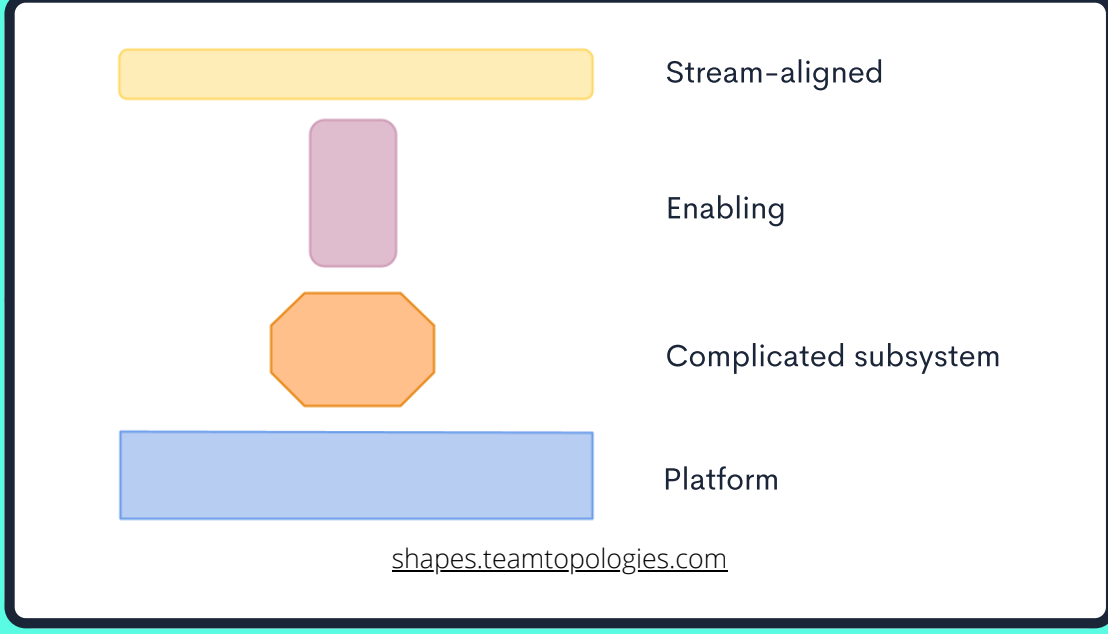
# Getting started with Team Topologies

A suggested approach to applying the concepts

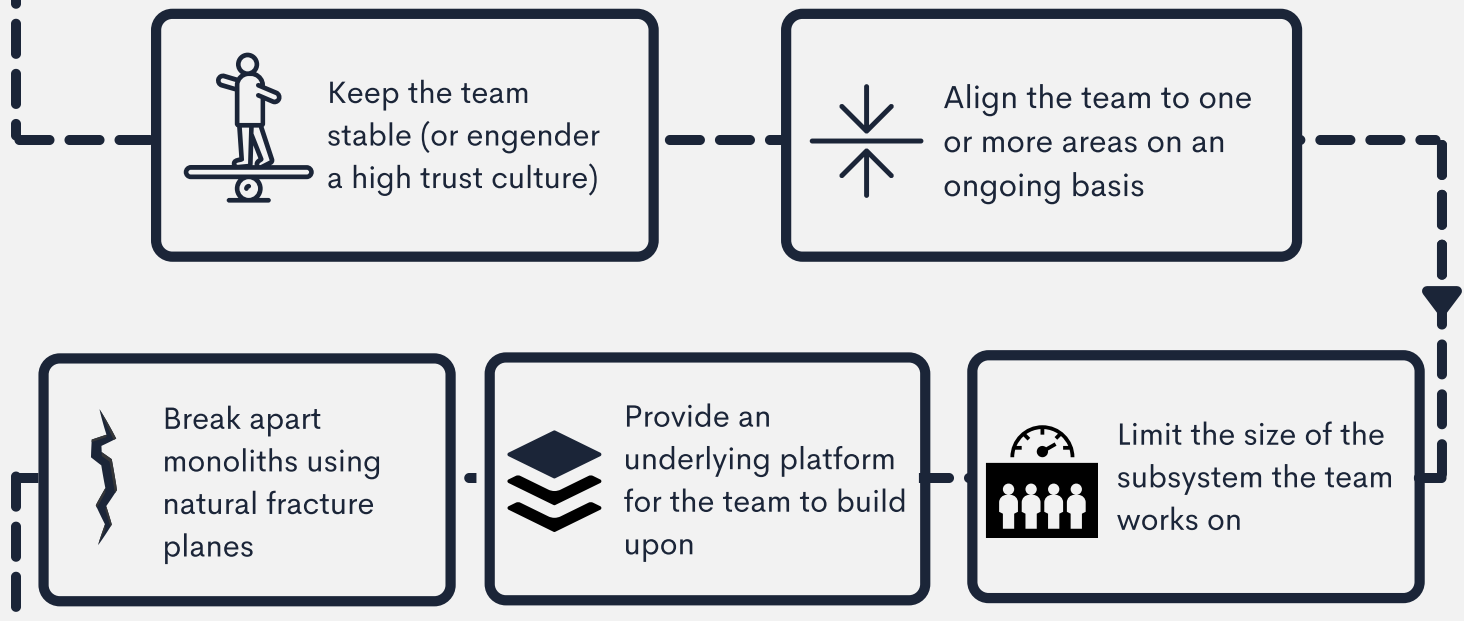
## 1. Identify what kind of teams you currently have



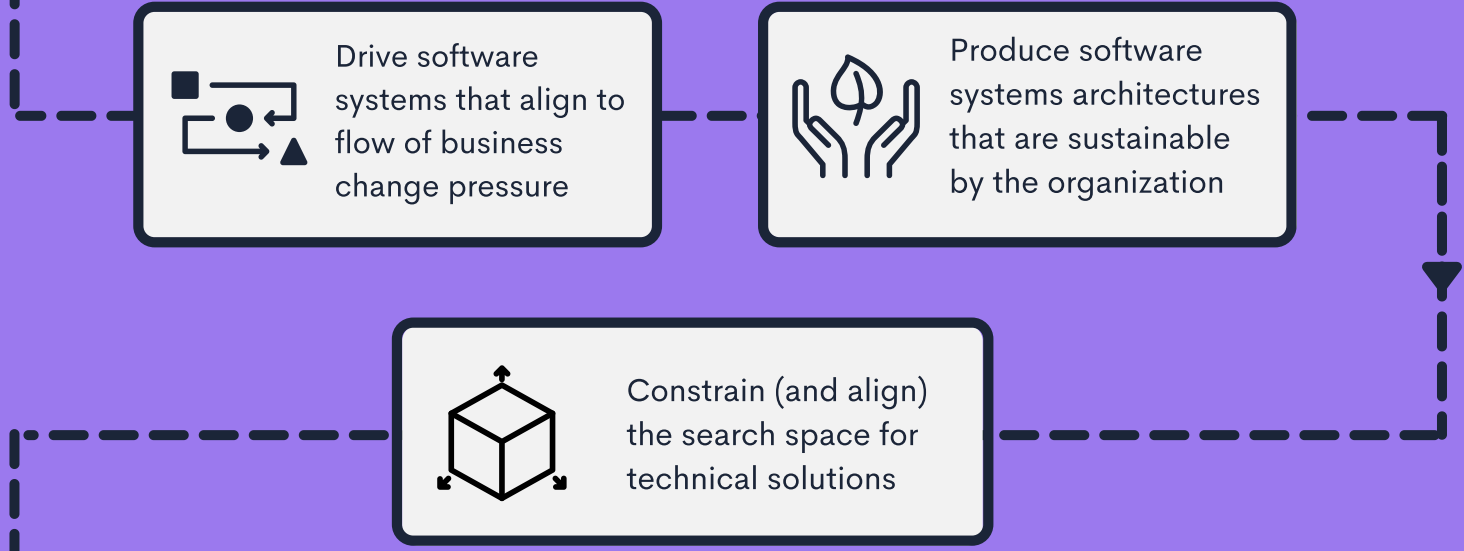
## 2. Fit technology teams to the fundamental team types



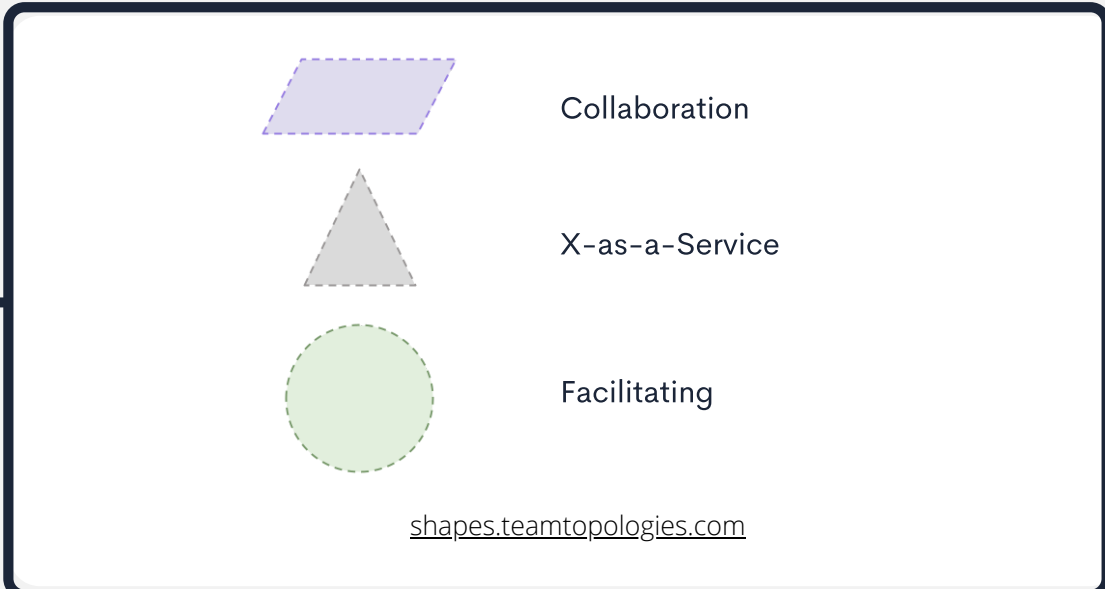
## 3. Limit the cognitive load for each team using...



## 4. Use the "Reverse Conway" approach to help to:



## 5. Identify as-is and to-be team interaction modes



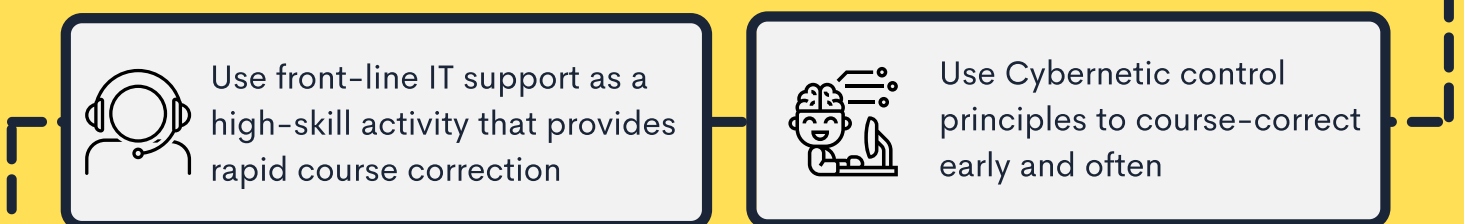
## 6. Explicitly guide (and limit) inter-team collaboration to



## 7. Evolve team structures explicitly over time



## 8. Use team interactions for organizational sensing



Organizing business and technology teams for fast flow

Discover more at [teamtopologies.com](https://teamtopologies.com)  
Find us online: @teamtopologies